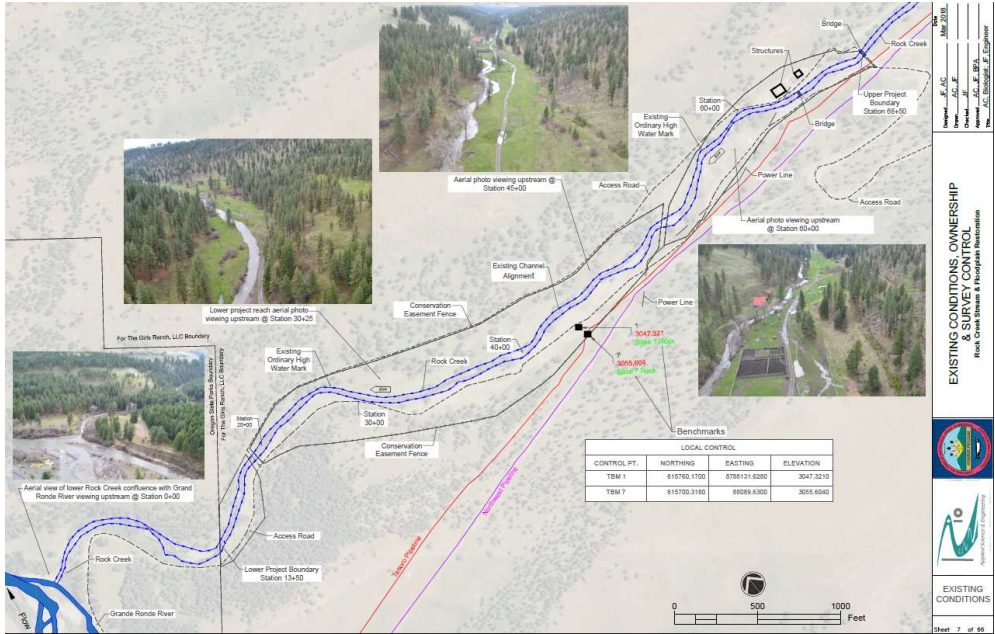


Rock Creek Fish Habitat & Floodplain Restoration

- 1.14 Mile Project Reach
- Summer 2018 Construction

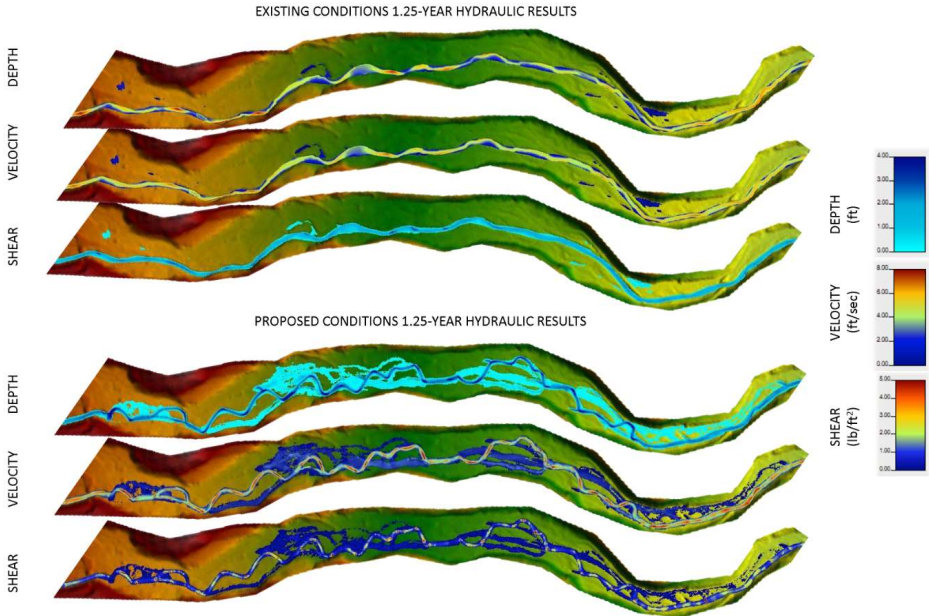
Project Metrics

- 4,300 ft. main channel
- 462 ft. side channel habitat
- 1,389 ft. alcoves (10 total)
- 36 large main channel pools (31 pools/mile)
- 23 acres restored floodplain
- 53 main channel large wood structures
- 155+ whole trees (channels and floodplain)
- 124+ small wood floodplain roughness structures
- -1,928 ft. brush mattress
- 1,833 ft. levee removal
- 5,248 ft. drawbottom road decommissioned

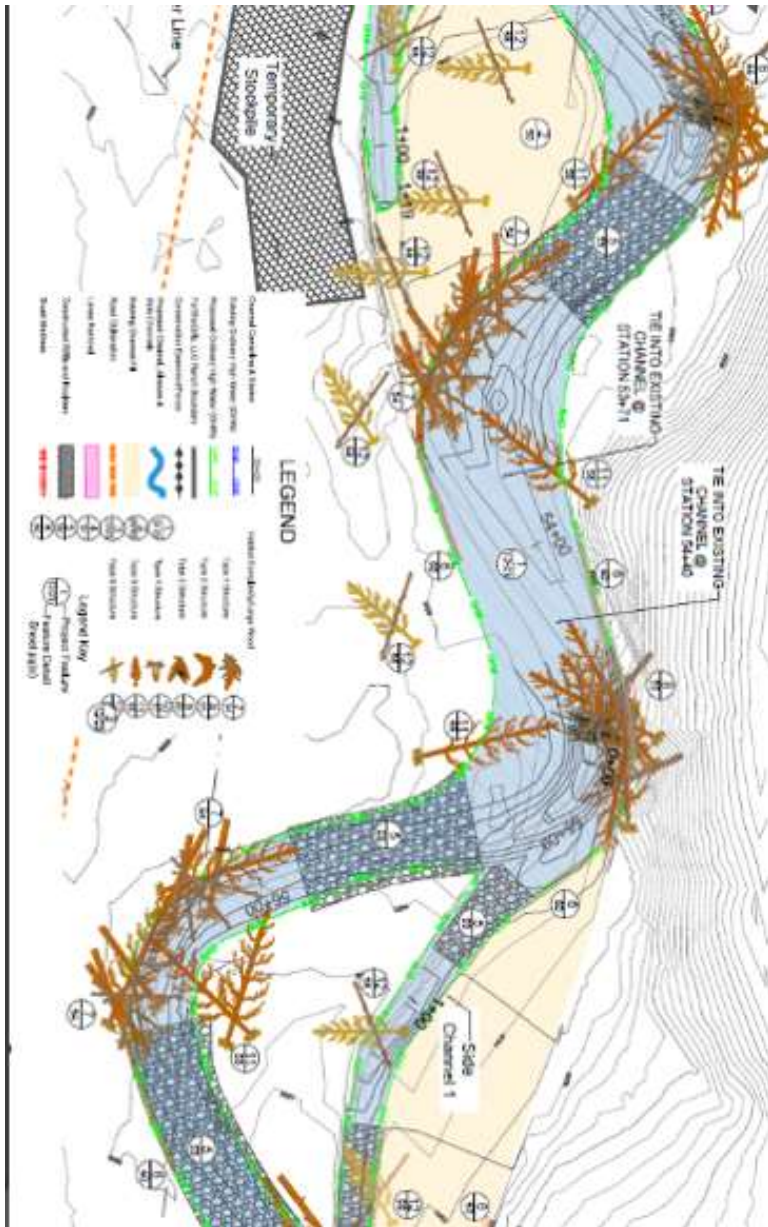


EXISTING CONDITIONS, OWNERSHIP & SURVEY CONTROL
Rock Creek Stream & Floodplain Restoration

EXISTING CONDITIONS
Sheet 2 of 88



Post Construction October 2018





April 2019

April 2012





April 2019

April 2012

